

Pacific WEDDINGS®

exotic destinations
vancouver island
real weddings
chanel bouquets
maui's italian villa
frilly cakes



THE
COLOR
ISSUE



SUMMER/FALL 2014
USA & CANADA \$5.95

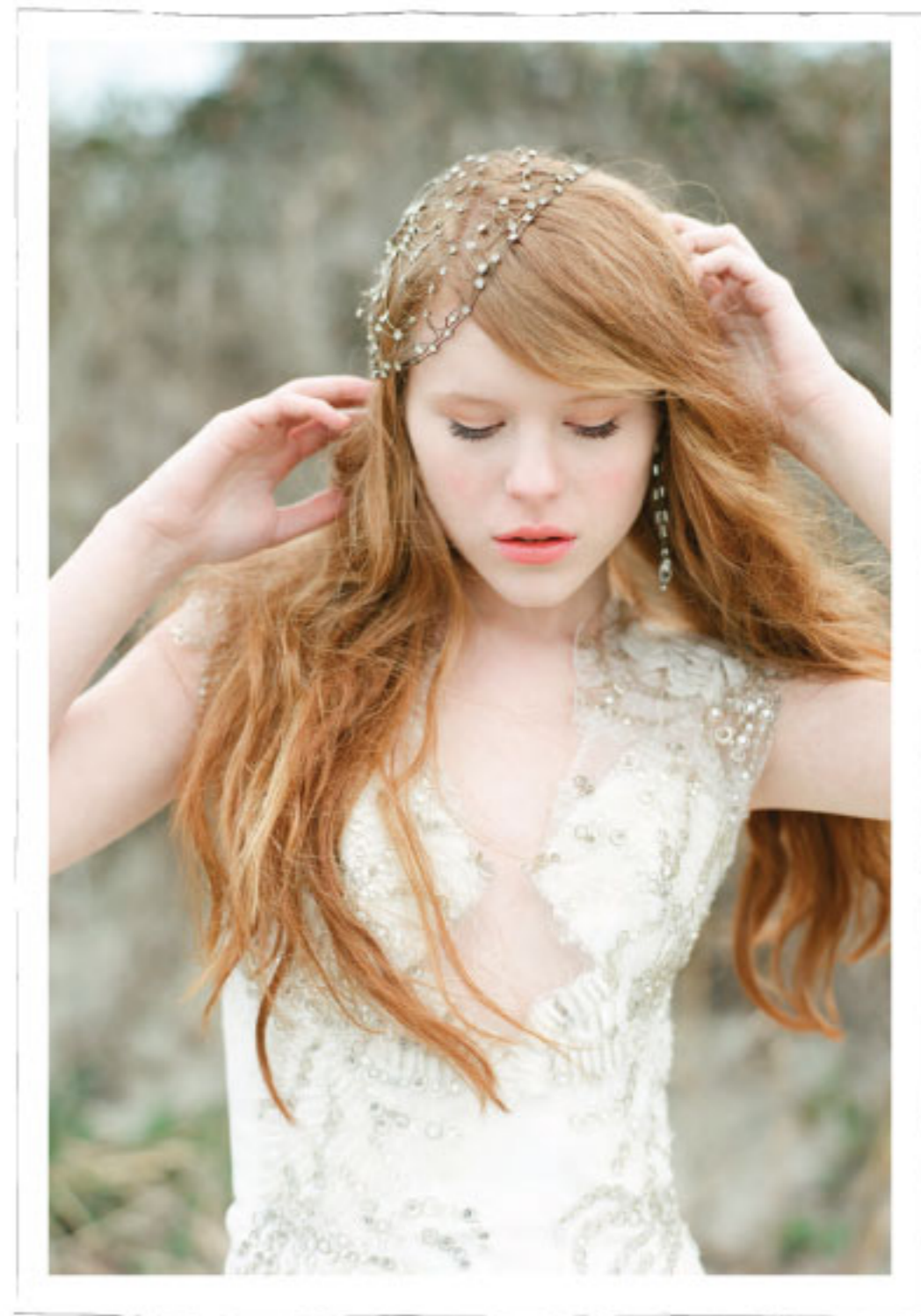


photography by corbin gurkin
styling by lindsay nowak
hair + makeup by ashley brook perryman
florals by annie bowen, charleston stams
tabletop by kristin newman designs
tulle linen design by roberta fischer
furniture + props by elizabeth stuart design
antique tableware by small masterpiece
cake by jim smeal



Rachel's ensemble begins with Carol Hannah's Le Etiole bustier paired with a silk chiffon Le Ciel skirt. Ralph Lauren Collection's cream ostrich feather cape is layered on top.

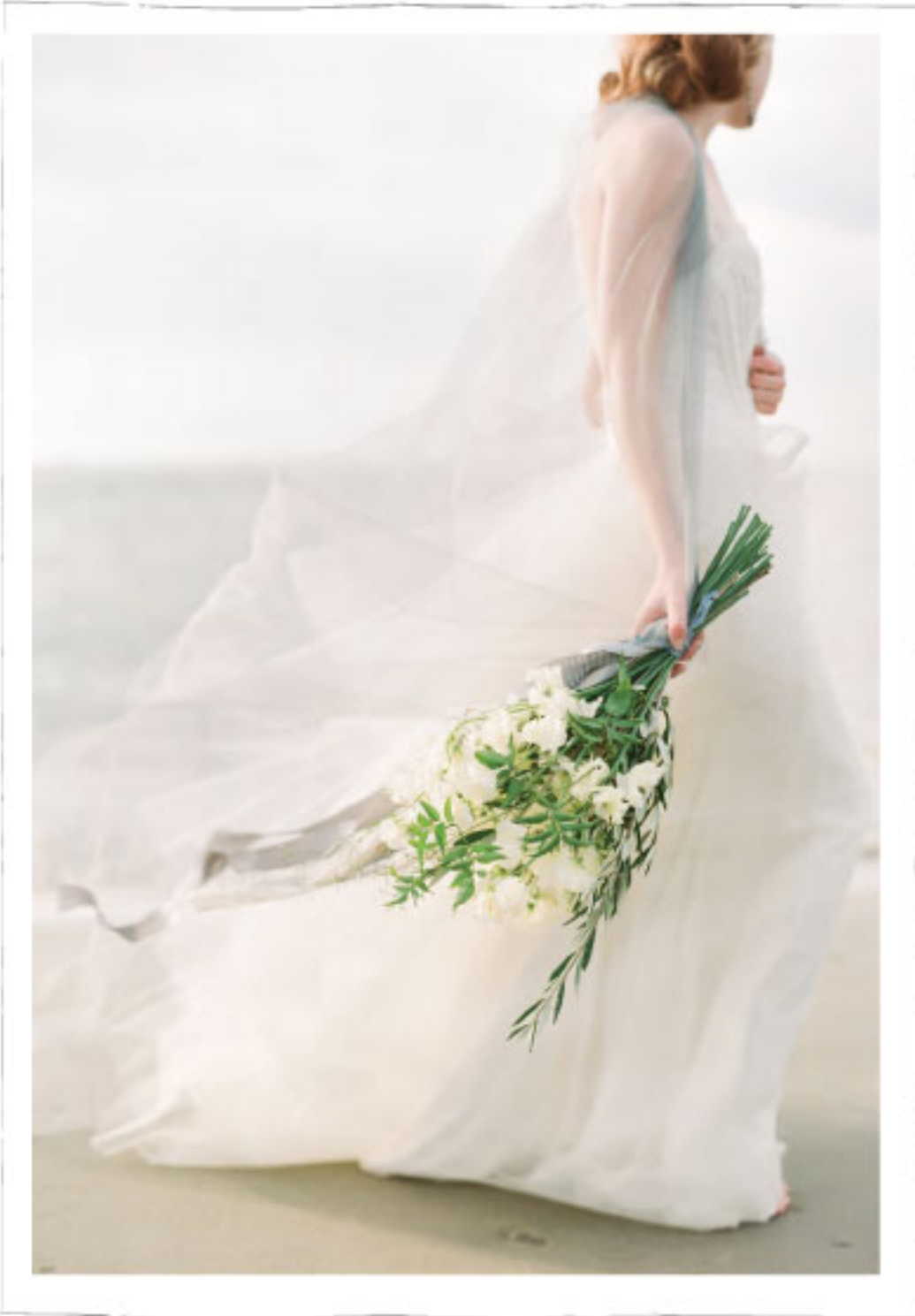
[THIS PAGE] Cypress BHLDN gown, Carol Hannah Whitfield custom made fishnet veil [OPPOSITE] Carol Hannah silk crape Le Soleil illusion gown, vintage Juliet cap and art deco earrings from the photographer's personal collection





[THIS PAGE] Elizabeth Dye pale mint Lewisia gown with lace bodice and weightless tulle skirt; [OPPOSITE] Ralph Lauren Collection ostrich feather cape





[THIS PAGE] Carol Hannah tulle La Monda ball gown, Carol Hannah Whitfield custom made tulle cape; [OPPOSITE] Kate Burley Millinery gold leaf and crystal rhinestone tiara





A painterly study in luminous blue, the table is draped in layers of frothy tulle. Florist Anne Bowen combines blush roses, ivory poppies and Lily of the Valley for a natural runner. The scene is at once simple and graceful. Chargers mimic the glimmering surface of the ocean on a sunny day. Each place setting is layered in white and crystal glassware by Small Masterpiece. Cake artist Jim Smeal gives drama and dimension to a monochromatic palette with crystallized sugar that mimics the white sand.



[OPPOSITE] Lewisia gown by Elizabeth Dye; [THIS PAGE] Carol Hannah silk chiffon sequin Les Astres gown, Out of Hand shell necklace, Carol Hannah Whitfield custom made feather and pearl headpiece

